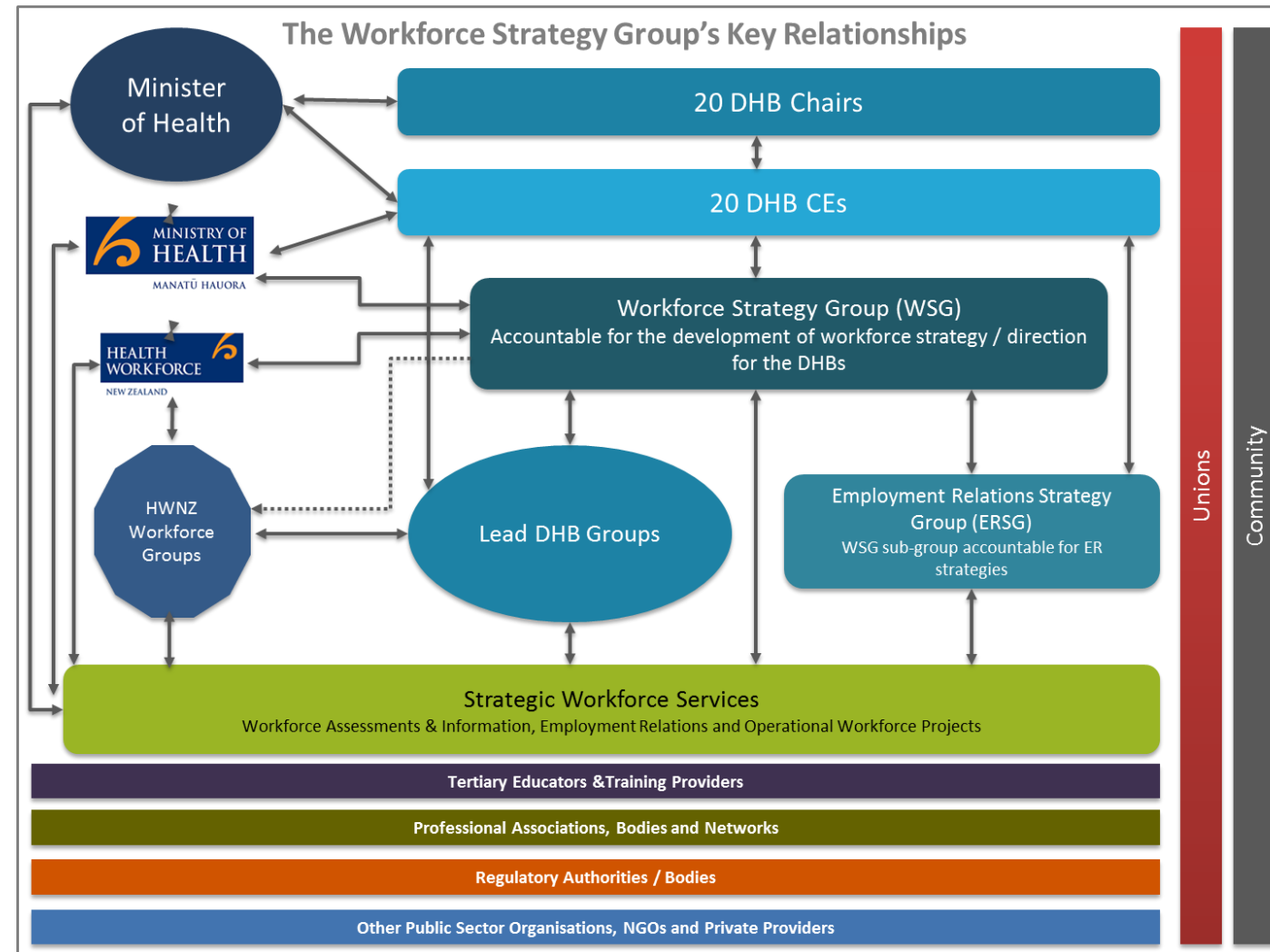


Landscape of Health Sector Workforce Groups

Maori Workforce Development

- **Tumu Whakarāe** -National DHB Reference Group of Māori Health Strategy Managers focusing on Māori workforce development within the DHBs
- **Ngā Manukura o Āpōpō Workforce Programme Steering Group** – supporting clinical leadership and development of Māori nurses and midwives
- **The Māori Provider Development Scheme (MPDS)**
- **Kia Ora Hauora** - aimed at promoting the health sector as a great career choice.
- **Te Rau Matatini** – Focuses on Māori Health workforce development and improving the cultural competency of the health workforce
- **Te Rau Puawai** – career opportunities or further qualifications in the area of Māori mental health.
- **Te Runanga (NZNO's Māori member)** Māori workforce development
- **Te Ohu Rata o Aotearoa (Te ORA) Māori Medical Practitioners Association** - is a professional body representing Māori medical students and doctors.



Allied Health Workforce

DHB Lead Groups

- Chief Operating Officers (COOs)
- General Managers Planning & Funding (GMsP&F)
- General Managers Human Resources GMsHR)
- Chief Medical Officers (CMOs)
- Directors of Allied Health (DAHs)
- Directors of Nursing (DoNs)
 - Midwifery Leaders Group
 - Directors of Mental Health Nursing

- National DHB Sonographer Workforce Development Programme (SWDP)
- National Radiology Advisory Group (NRAG)
- The National Pathology and Laboratory Roundtable

- The Werry Centre – develops & supports the child and adolescent mental health workforce
- Te Pou o Te Whakaaro Nui – develops the mental health, addiction and disability workforce
- Le Va –Support Pacific health workforce in mental health, addiction and disability

Mental Health, Addiction & Disability Workforce

Nursing Workforce

- **Nurse Education Advisory Team (NEAT)** - Coordinates educational activities across the tertiary providers and links with HWNZ funding to support the needs of DHBs and their nursing population.
- **Post Graduate Coordinators Group** - Advises on educational requirements.
- **Nurse Entry to Practise and Nurse Entry to Speciality (NEtP/ NESP) Coordinators Group** - Standardises first year of clinical practise, aligns to learning outcomes, and to a funding stream.
- **Nursing ACE Reference Group** - Supports the ACE Scheme for new graduates applying for a Registered Nurse position in a NETP or NESP (Mental Health and Addiction Nursing) programme.

Union Engagement Groups

- Health Sector Relationship Agreement (HSRA) Steering Group
- Midwifery Engagement Group
- NBAG (National Bi-partite Action Group)
- National Joint Consultation Committee (ASMS)
- NJCC (National Joint Consultative Committee) - SMOs
- National Radiology Action Group
- NEF (National Engagement Forum for Allied, Public Health, and Technical members of PSA)
- NLEG (National Laboratory Engagement Group)
- NREG (National Resident Doctor Engagement Group)
- MRTAC (MRT Action Committee with APEX)
- Regional Clerical Groups

HWNZ Taskforce Groups

Pacific Workforce Development

- Aniva - Pacific Health Leadership Development
- DHB GMs Pacific Health

- Medical
- Nursing
- Allied Health, Science and Technical Workforces
- Kaiāwhina Workforce (Careerforce)
- Leadership
- Midwifery Strategic Advisory Group

Shared Services

- **Technical Advisory Services (TAS)** – focuses on workforce services, clinical network coordination, regional service planning, provider audit, regional clinical information services and DHB Shared Services (Central Region Support Agency)
- **Northern Regional Alliance** (Northern Region Support Agency)
- **HealthShare** (Midland Region Support Agency)
- **Health Alliance** (Auckland)
- **South Island Alliance** (Regional Support Agency)
- **NZ Health Partnerships Limited**
- **Regional Training Hubs (Northern, Midland, Central & South Island)** support the training of health professionals to meet local community needs and make better use of resources. The hubs cover the four DHB regions, and are led by regional directors of workforce development. HWNZ funded.

Medical Workforce

- Governance Group of Clinical Based Attachments
- Management Group of Clinical Based Attachments
- National RMO Engagement Group
- National Joint Consultative Committee
- RMO Operations Group
- ACE RMO Reference Group
- MCNZ/DHB Oversight Group